



GUY CARPENTER  
STRATEGIC ADVISORY®  
GROWTH | CAPITAL | RISK | INSIGHT

# CAPITAL MODELING SOLUTIONS





# A complete range of Flexible Economic Capital


No two insurance companies are alike. But every company — whether it's a less complex organization or a major multi-national — can utilize capital modeling to more effectively assess key risks, benchmark risk profiles, inform risk tolerances, allocate capital, meet regulatory and rating agency requirements and strategize for the future. Guy Carpenter understands that capital modeling is not one size fits all and provides a complete range of economic capital modeling solutions that can be tailored to your resources and preferences for customization and risk-based decision support.

Companies of every type — big or small, a recent start-up or an industry veteran — can benefit from Guy Carpenter's solutions.

- **For less complex companies new to capital modeling, our GC Projector™ helps with financial projections, stress testing and rating agency evaluations.**
- **Many small and medium-sized companies benefit from BenchmaRQ®, a service providing standardized capital modeling results for individual and peer companies. Clients can add customized enhancements with BenchmaRQ® +.**
- **Those companies developing their own more sophisticated models use MetaRisk®, the industry's leading timeline-based capital modeling software, and MetaRisk® Reserve™, which measures reserve risk.**
- **Insurers with existing models in other platforms turn to Guy Carpenter for model validation to fulfill ORSA requirements and for reporting to board committees responsible for ERM governance.**

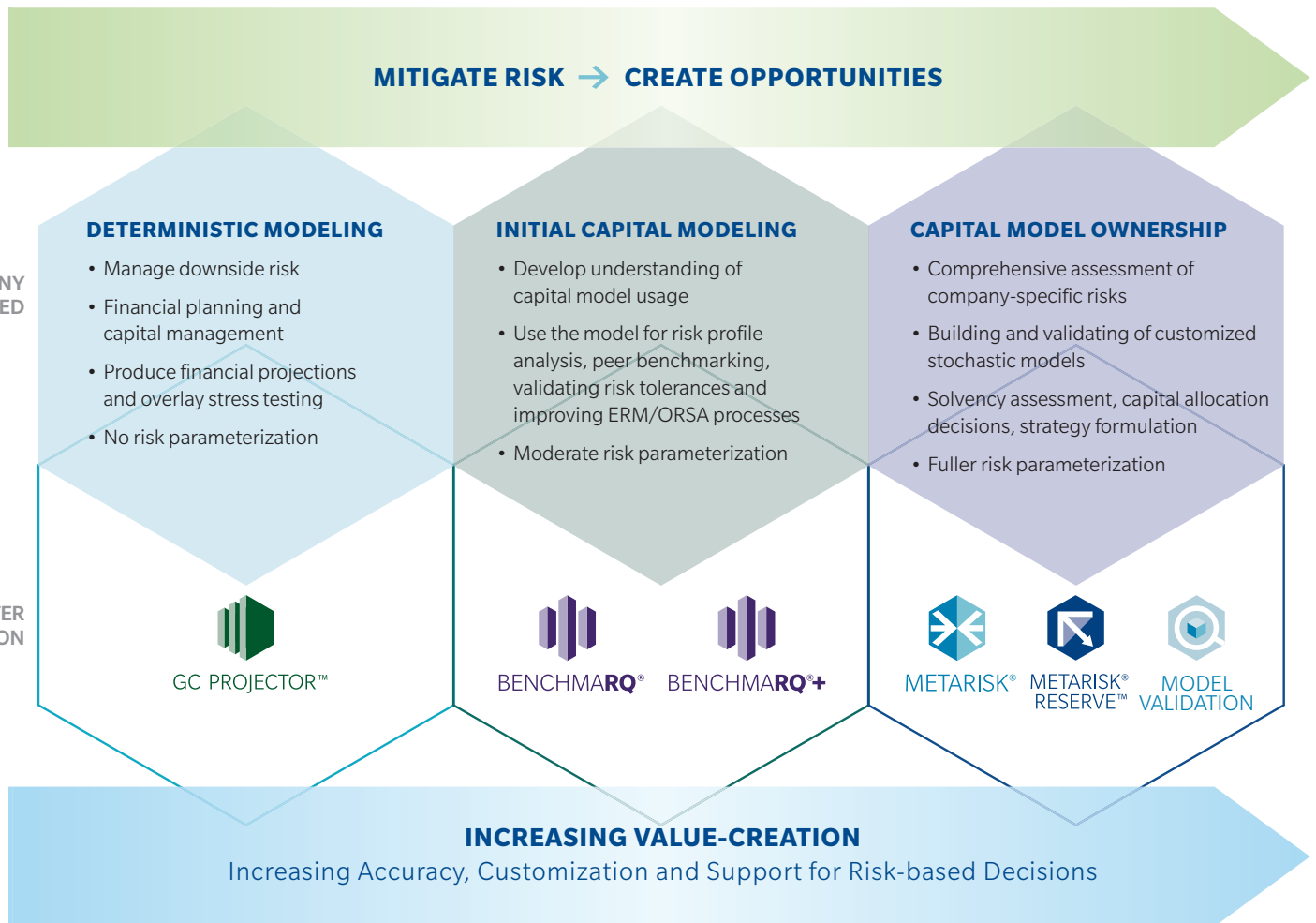
Effective capital modeling is critical for today's insurers to address the ever-increasing expectations of all stakeholders, from regulators and rating agencies to board members and policyholders. Guy Carpenter's full range of solutions, in-depth industry knowledge and experience, and unparalleled support as a trusted advisor can help your company further develop and customize your capital model to assist with important risk-based decisions.

Guy Carpenter's capital modeling solutions are designed to meet the needs of a wide spectrum of insurers. Whether your firm's needs are less complex and you are new to the process or you represent a large company with a fully developed in-house model, Guy Carpenter can work with you to customize and implement the solution that best serves your unique needs.









# Modeling Solutions

Capital Modeling Solutions for the Full Spectrum of Insurance Company Needs



# A Complete Range of Solutions to Fit Your Needs

Solution		Key Benefit	User Profile
 GC PROJECTOR™	Deterministic multi-year model that projects financials and provides insights into key metrics to assist with business planning, stress testing and rating agency evaluations.	Traditional financial planning tool with stress testing overlay and direct links to BCAR results to enhance capital management and interactions with rating agencies.	Smaller regional insurers with less complex modeling needs seeking to manage their risk downside using deterministic assumptions and with limited resources to run the model.
 BENCHMARQ®	Standardized pre-built stochastic model using industry data and proprietary risk models. Simulates one year of company performance and provides financial statements associated with various outcomes.	Benchmarks risk profile relative to peers, features user-friendly reports and graphics and informs risk tolerance setting.	Mid-sized companies that desire substantial risk-based information and a better understanding of using stochastic capital models but do not have resources to build one at this time. Also, companies with internal models that want to compare modeling outcomes.
 BENCHMARQ®+	Customized version of BenchmarQ that includes company-specific enhancements.	Provides single or multi-year stochastic projections. Helps with underwriting planning, managing reserve risk and non-cat reinsurance purchasing.	Companies that need specific, customized enhancements in their modeling, yet are not prepared to own and maintain an in-house model.
 METARISK®	Customized single or multi-year stochastic model that assists clients in building a fully parameterized model that provides a comprehensive assessment of risks. Powerful software application for capital modeling, in addition to reinsurance evaluation, catastrophe management, assumed reinsurance pricing, capital allocation and curve-fitting.	The industry's leading timeline-based capital modeling software, fully customized with fuller risk parameterization. Full-time access to support from capital modeling experts.	Primarily large companies, but also smaller and medium-sized ones, that typically have internal modeling capabilities and seek comprehensive assessment of company-specific risks.
 METARISK® RESERVE™	Stochastic reserving software that enables companies to quantify reserves and measure reserve risk through generalized linear modeling. Integrates seamlessly with MetaRisk or can be used on a standalone basis.	Incorporates inflationary effects into reserve risk assessments. Outputs can be used with any capital model.	Companies seeking a clearer picture of their reserve risk and variability.
 MODEL VALIDATION	Independent evaluation of a company's existing capital model by comparing it to a parallel model developed by Guy Carpenter.	Parallel models developed by industry-leading developers and actuaries. Capital modeling experts provide evaluation and consultation.	Companies with fully developed internal models that require validation and consulting services.

## Contacts

To learn more about our Economic Capital Modeling Solutions, contact your local Guy Carpenter representative or one of these specialists:

### Vin Ranade

GC Projector  
+1 973 285 7973  
vinayak.ranade@guycarp.com

### Steve White

MetaRisk, MetaRisk Reserve  
+1 206 621 3096  
steve.white@guycarp.com

### Gina Carlson

BenchmarQ, BenchmarQ+, Model Validation  
+1 952 832 2235  
gina.carlson@guycarp.com

### Blake Berman

BenchmarQ, BenchmarQ+, Model Validation  
+1 917 937 3272  
blake.berman@guycarp.com

### Paul Silberbush

MetaRisk, MetaRisk Reserve, Model Validation  
+1 917 937 3251  
paul.silberbush@guycarp.com

### Julia Chu

Capital and Growth Advisory  
+1 917 937 3052  
julia.chu@guycarp.com

### About Guy Carpenter

Guy Carpenter & Company, LLC is a leading global risk and reinsurance specialist. Since 1922, the company has delivered integrated reinsurance and capital market solutions to clients across the globe. As a most trusted and valuable reinsurance broker and strategic advisor, Guy Carpenter leverages its intellectual capital to anticipate and solve for a range of business challenges and opportunities on behalf of its clients. With over 2,300 professionals in more than 60 offices around the world, Guy Carpenter delivers a powerful combination of broking expertise, strategic advisory services and industry-leading analytics to help clients achieve profitable growth. For more information on Guy Carpenter's complete line-of-business expertise and range of business units, including GC Specialties, GC Analytics®, GC Fac®, Global Strategic Advisory, GC Securities\*, Client Services and GC Micro Risk Solutions®, please visit [www.guycarp.com](http://www.guycarp.com) and follow Guy Carpenter on LinkedIn and Twitter @GuyCarpenter.

Guy Carpenter is a wholly owned subsidiary of Marsh & McLennan Companies (NYSE: MMC), a global professional services firm offering clients advice and solutions in the areas of risk, strategy, and people. With annual revenue of more than \$13 billion and approximately 60,000 colleagues worldwide, Marsh & McLennan Companies provides analysis, advice, and transactional capabilities to clients in more than 130 countries through: Marsh, a leader in insurance broking and risk management; Mercer, a leader in health, wealth and career consulting; and Oliver Wyman, a leader in management consulting. Marsh & McLennan is committed to being a responsible corporate citizen and making a positive impact in the communities in which it operates. Visit [www.mmc.com](http://www.mmc.com) for more information and follow us on LinkedIn and Twitter @MMC\_Global.

\*Securities or investments, as applicable, are offered in the United States through GC Securities, a division of MMC Securities LLC, a US registered broker-dealer and member FINRA/NFA/SIPC. Main Office: 1166 Avenue of the Americas, New York, NY 10036. Phone: (212) 345-5000. Securities or investments, as applicable, are offered in the European Union by GC Securities, a division of MMC Securities (Europe) Ltd. (MMCSEL), which is authorized and regulated by the Financial Conduct Authority, main office 25 The North Colonnade, Canary Wharf, London E14 5HS. Reinsurance products are placed through qualified affiliates of Guy Carpenter & Company, LLC, MMC Securities LLC, MMC Securities (Europe) Ltd. and Guy Carpenter & Company, LLC are affiliates owned by Marsh & McLennan Companies. This communication is not intended as an offer to sell or a solicitation of any offer to buy any security, financial instrument, reinsurance or insurance product.

© 2017 Guy Carpenter & Company, LLC All rights reserved.